

3-PHASE

PADMOUNT

**Thousands of transformers.
In stock. Ready to ship.**

XINBEIJIN padmount transformers are constructed with the highest quality materials and built in accordance with the highest industry standards including NEMA, ANSI C.57, DOE, and IEEE as applicable. They are ideal for commercial and industrial applications: data centers, solar step-up, utility projects, manufacturing facilities, shopping centers, etc.

XINBEIJIN manufactures and assembles pad-mounted transformers in various dimensions, all of which can be customized to your specific requirements. You can rest assured with our competitive tariff rates. XINBEIJIN is fully ready to provide reliable power support for your projects.



Design

HV Bushing Config:

1. Dead front or live front
2. Loop feed or radial feed

Fluid Options:

1. Type II mineral oil
2. Envirotemp™ FR3™

Standard Gauge/

Accessory Package:

1. Pressure relief valve
2. Pressure vacuum gauge
3. Liquid temp & level gauges
4. Drain & sample valve
5. Adjustment taps

Switch Options:

1. 2 position LBOR switch
2. 4 position LBOR switch (V-blade or T-blade)
3. (3) 2 position LBOR switches

Fusing Options:

1. Bayonets w/ isolation links or CLFs

Construction:

1. 5-legged core
2. Rectangular wound copper or aluminum windings
3. Carbon reinforced or stainless steel tank
4. Steel divider between HV & LV cabinets
5. Penta-head captive bolt

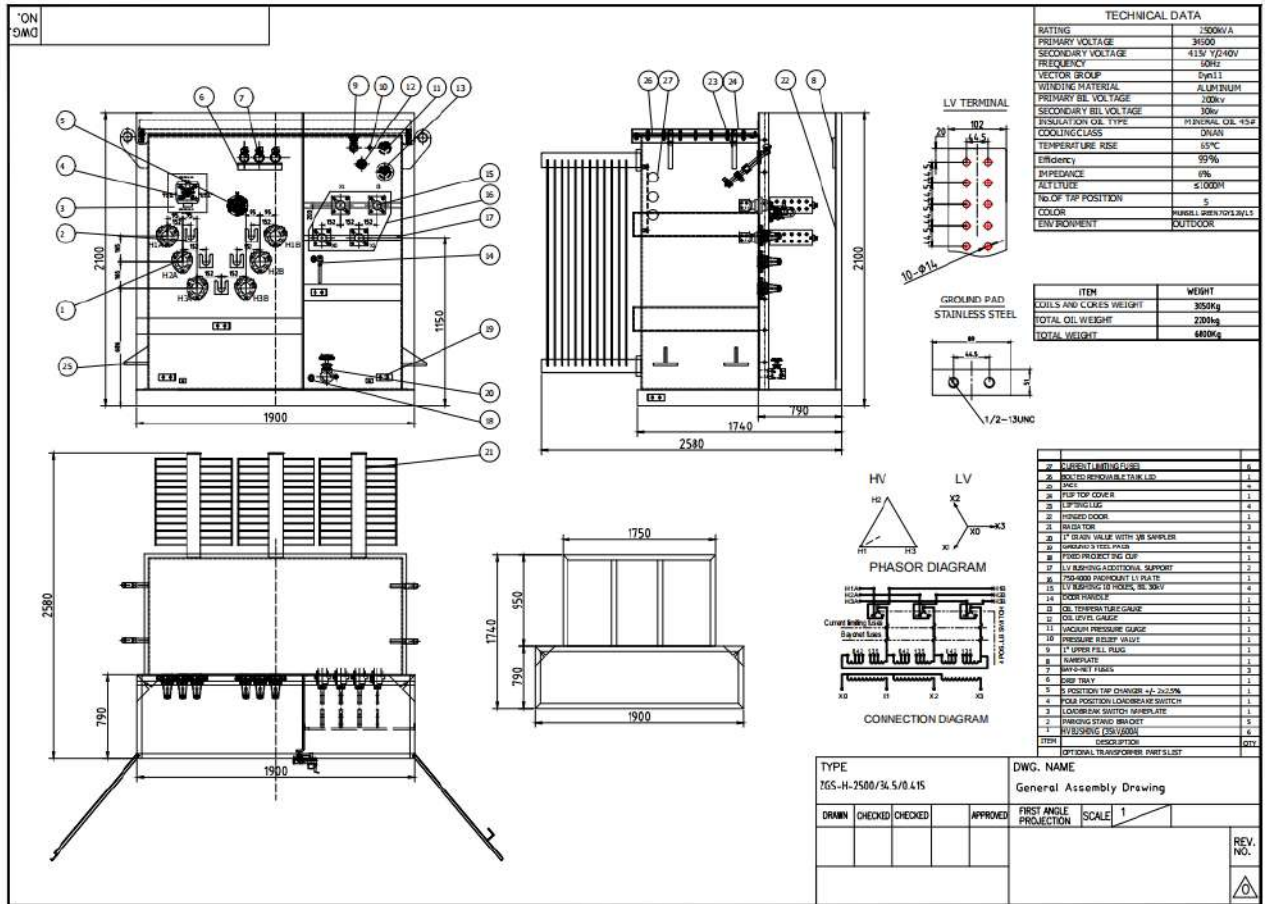
Optional Design Features & Accessories:

1. Gauges w/ contacts
2. External drain and sample valve
3. Electrostatic shielding
4. K-factor design
5. Step-up design
6. Surge-arresters

Available Ratings

Sizes (kVA)	45 75 112.5 150 225 300 500 750 1000 1250 1500 1750 2000 2250 2750 3000 3750 5000
Frequency	60 Hz or 50 Hz
Cooling Class	ONAN or KNAN
Temp Rise	55°C 65°C 55/65°C
Voltages	Available in Δ or Y configuration
600V	208 240 416 480 600
2.5kV – 5kV	2400 4160 4800
15kV	12000 12470 13200 13800 14400
25kV	20780 21600 22900 24940 26400
35kV	33000 34500

Outline & Approximate Dimensions



Inside & Common Accessories

